

## Profilgehäuse Serie PG

## profile housing series PG

**Die Serie PG besticht durch ihre vollkommen freien Gestaltungsmöglichkeiten hinsichtlich Form und Größe.**

**The PG series is characterized by various design options in shape and size.**

**Bestehend aus Eckwinkelprofilen und Aluminiumblechen, sind die verschiedensten Formen denkbar.**

**Consisting of corner profiles and aluminum sheets.**

Alle Bauteile sind naturfarbig eloxiert. Die Materialstärke der Bleche beträgt 2 mm. Es können auch Bleche mit größerer Stärke verwendet werden.

All components are natural anodized. The thickness of the aluminium sheets is 2 mm. It's also possible to use thicker material.

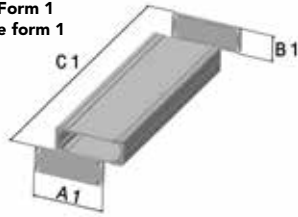
Da die Gestaltungsmöglichkeiten sehr vielfältig sind, gibt es zu dieser Serie keine Standardgrößen. Alle Parameter werden individuell auf die Kundenwünsche und den beabsichtigten Verwendungszweck abgestimmt. Zur Anforderung von Konstruktionsdaten wenden Sie sich bitte an unsere Konstruktionsabteilung.

We do not have standard sizes for this series, because of the many design possibilities. All parameters are individually defined to the customer requirements and the intended use. To request construction data, please contact our development-department.

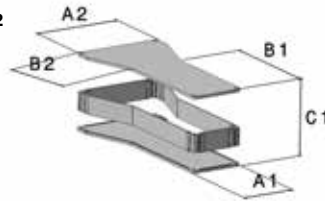
Mindestbestellmenge 10 Stück in gleicher Form und Ausführung.

Minimum order quantity 10 pieces with the same shape and dimensions.

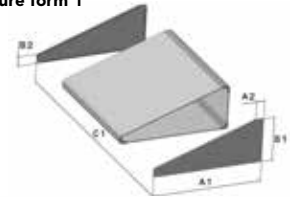
Handgehäuse Form 1  
Hand enclosure form 1



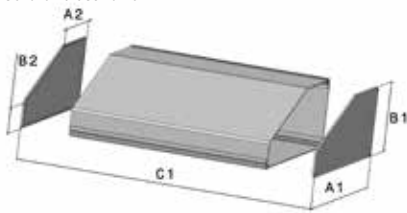
Handgehäuse Form 2  
Hand enclosure form 2



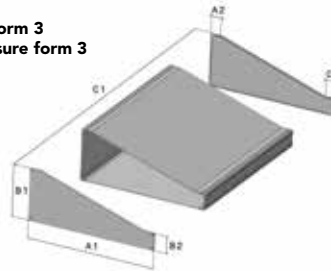
Pultgehäuse Form 1  
Console enclosure form 1



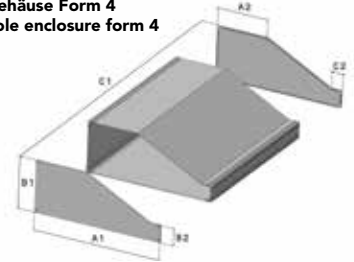
Pultgehäuse Form 2  
Console enclosure form 2



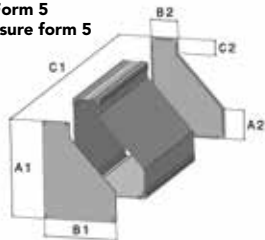
Pultgehäuse Form 3  
Console enclosure form 3



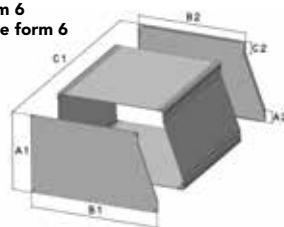
Pultgehäuse Form 4  
Console enclosure form 4



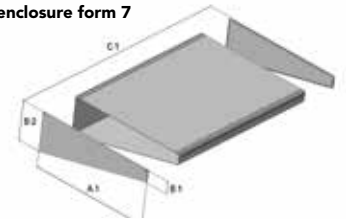
Pultgehäuse Form 5  
Console enclosure form 5



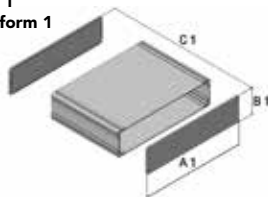
Pultgehäuse Form 6  
Console enclosure form 6



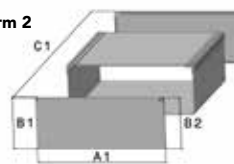
Pultgehäuse Form 7  
Console enclosure form 7



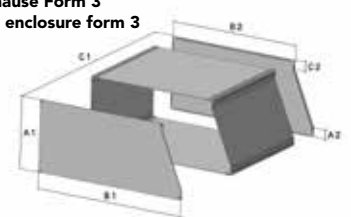
Tischgehäuse Form 1  
Desktop enclosure form 1



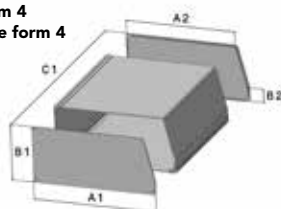
Tischgehäuse Form 2  
Desktop enclosure form 2



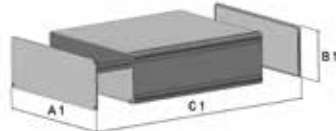
Tischgehäuse Form 3  
Desktop enclosure form 3



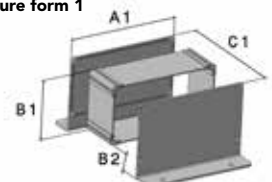
Tischgehäuse Form 4  
Desktop enclosure form 4



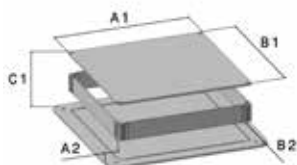
Tischgehäuse Form 5  
Desktop enclosure form 5



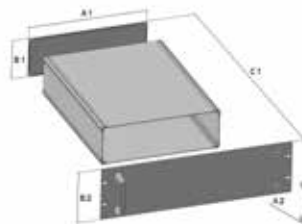
Wandgehäuse Form 1  
Wall mount enclosure form 1



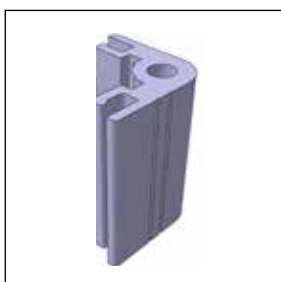
Wandgehäuse Form 2  
Wall mount enclosure form 2



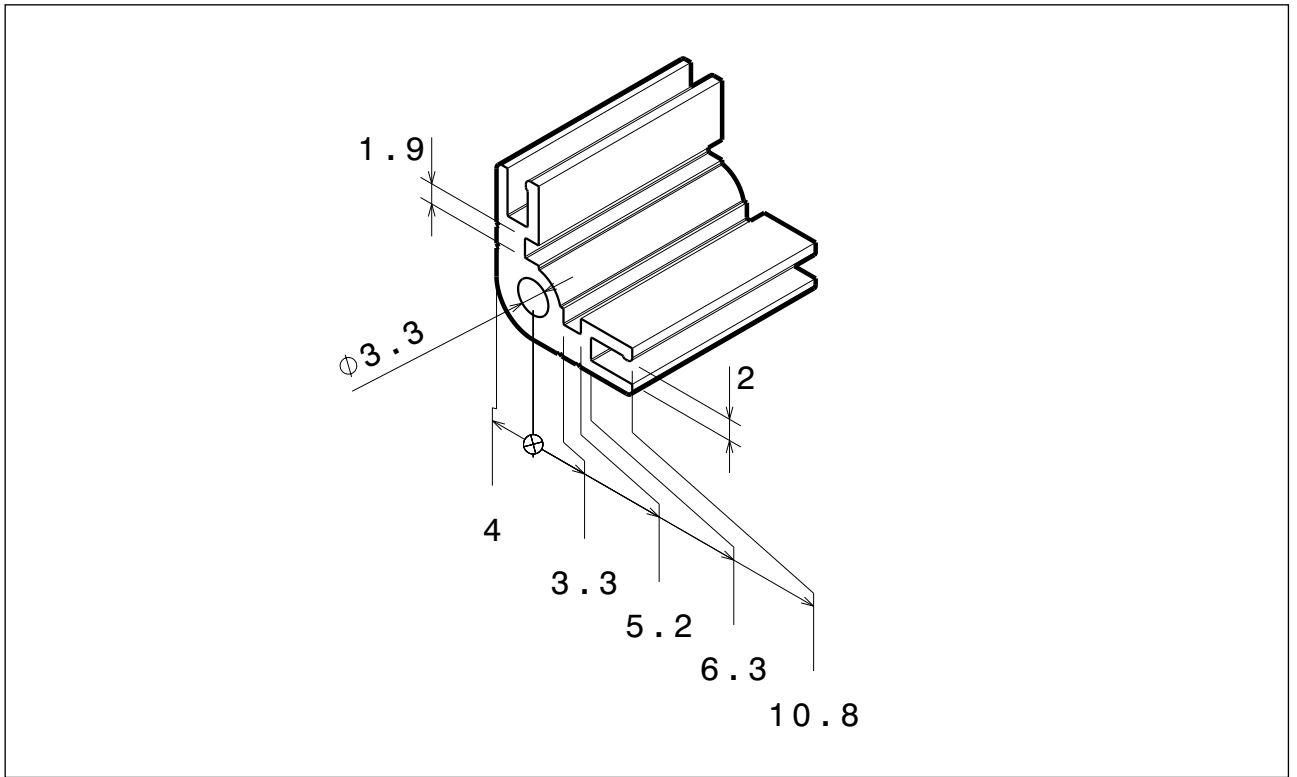
19"-Gehäuse Form 1  
19"-enclosure form 1



## Farbige Kunststoffecken aus Polyamid als Eckenschutz oder Designelement Colored plastic polyamide corners as protection or design elements



Bezeichnung / Part name	Best.-Nr. / Part no.
Eckenschutz orange corner protection orange	PG1520
Eckenschutz nachtblau corner protection night blue	PG1521
Eckenschutz anthrazit corner protection anthracite	PG1522
Eckenschutz grün corner protection green	PG1523



**GP1515**

Eckprofil  
corner profile