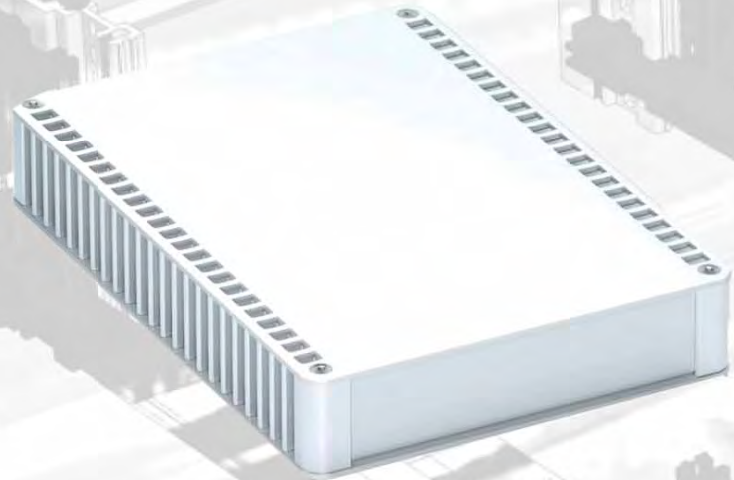
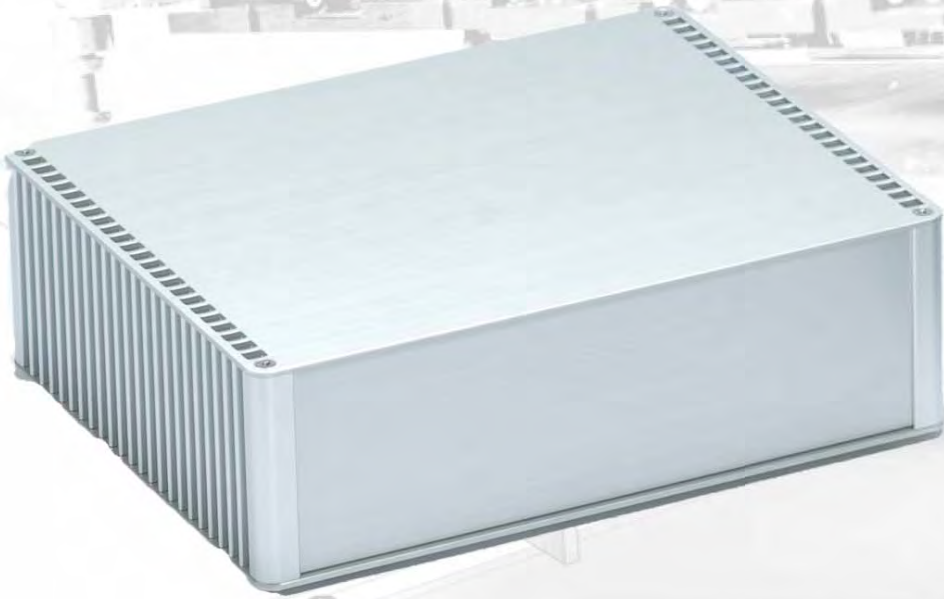
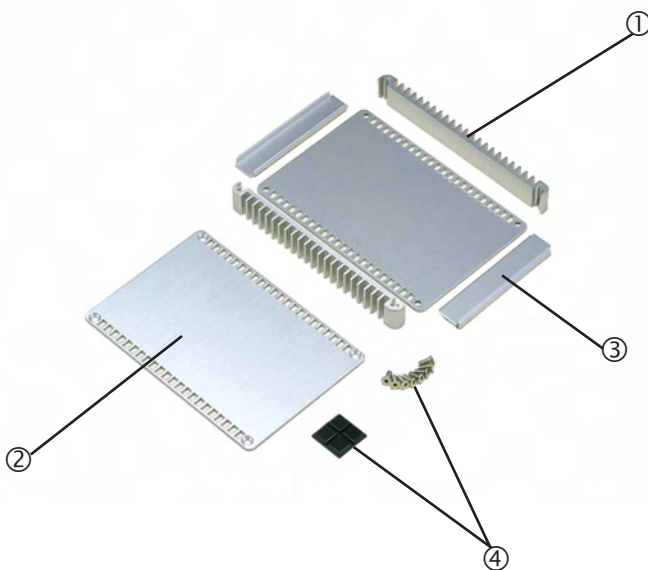
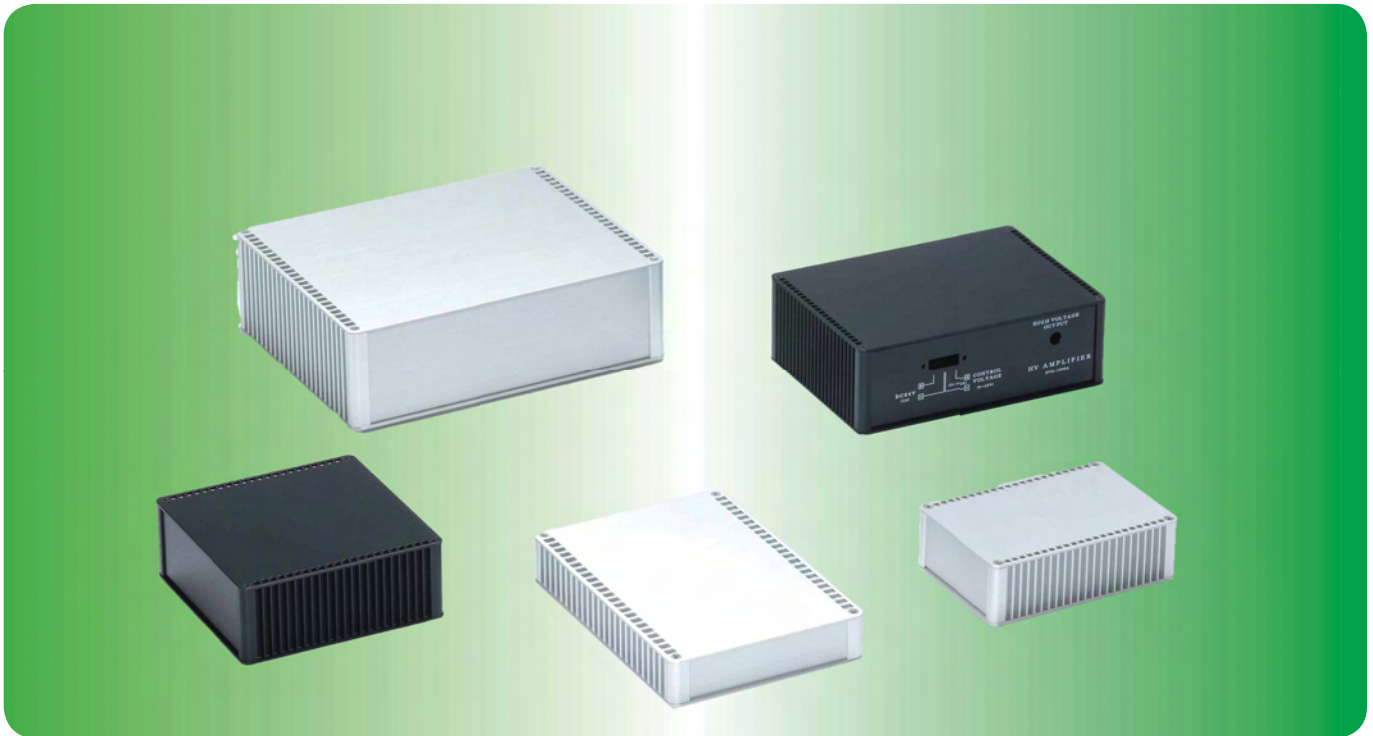


HIT



Serie HIT Kühlkörpergehäuse

Series HIT heat-sink aluminium case



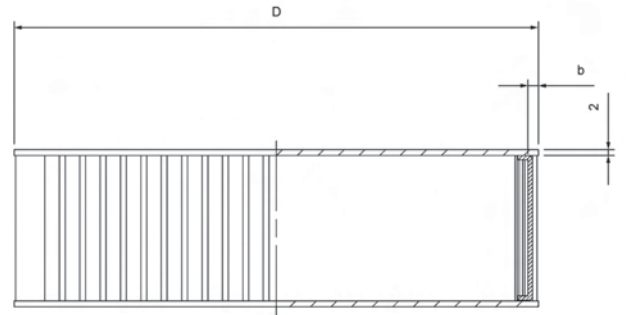
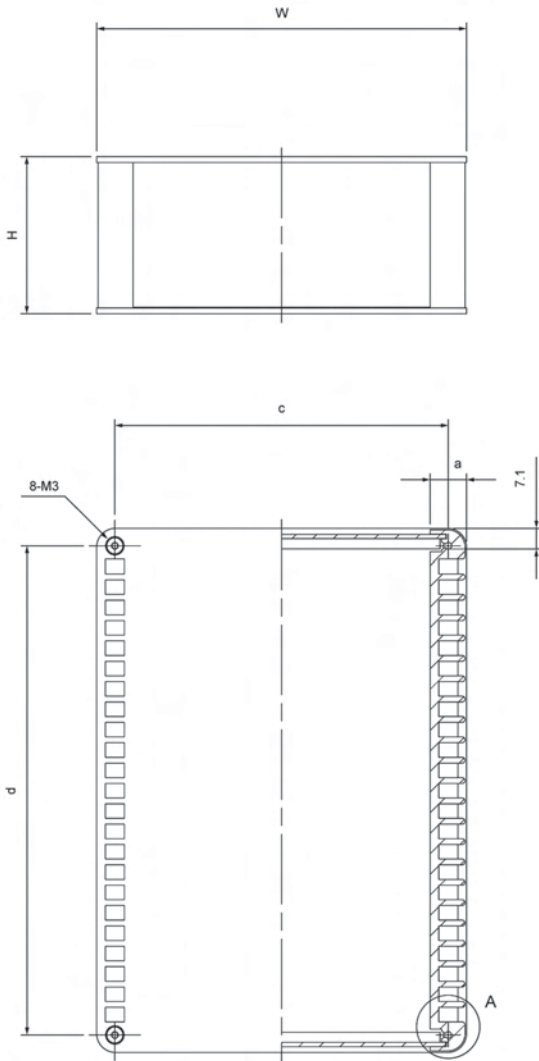
Eigenschaften

- Kühlkörper - Seitenwand aus Strangpressprofil,
- Verfügbar in 12 Größen.

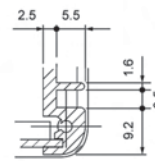
Features

- equipped with heat-sink side plates,
- available in 12 sizes.

Ref.-Nr. Ref. no.	Bezeichnung Part name	Stück Pcs	Material Material	Farbe / Oberfläche Color / Finish
1	Kühlkörper-Seitenplatte heat-sink side plate	2	Aluminium-Strangpressprofil aluminium extrusion	silber / schwarz eloxiert silver / black anodized
2	Deckel / Boden top and bottom cover	2	Aluminium t = 2.0 mm aluminium t = 2.0 mm	silber / schwarz eloxiert silver / black anodized
3	Front-, Rückplatte front and rear panel	2	Aluminium t = 1.5 mm aluminium t = 1.5 mm	silber / schwarz eloxiert silver / black anodized
4	GummifüÙe rubber feet	4	Polyurethan polyurethane	schwarz black
-	Schrauben screw	1 Satz 1 set	Edelstahl / Stahl M3 stainless steel / Steel M3	kein Finish / schwarz verchromt no finish / black trivalent chromate

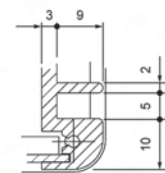


HIT□-□-13



A cross-section

HIT□-□-18



A cross-section

Farben (bei Bestellung ergänzen)
Colors (suffix to part no. when ordering)

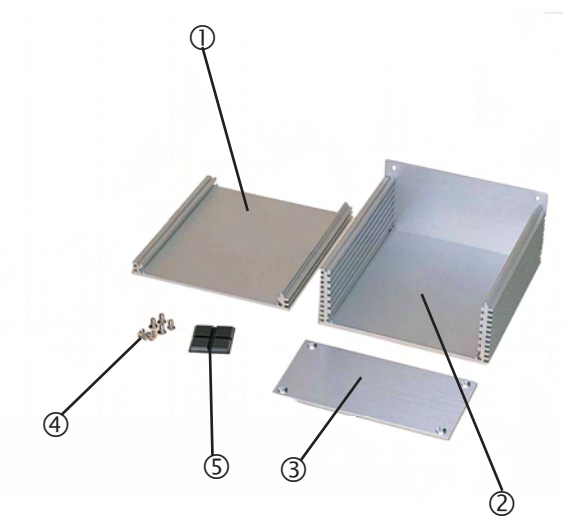
Farbcode Color code	Deckel / Grundplatte Top / bottom cover	Vorder- und Rückseite Front / rear panel	Seitenplatte Side plate
SS	silber silver	silber silver	silber silver
BB	schwarz black	schwarz black	schwarz black

□□ Siehe Farbtabelle
□□ See color chart

Best.-Nr. Part no.	W	H	D	a	b	c	d	Gewicht (g) Weight
HIT9213□□	89	20	130	8	3,6	81	118,6	183
HIT9413□□	89	40	130	8	3,6	81	118,6	255
HIT13313□□	130	30	130	8	3,6	122	118,6	289
HIT13513□□	130	50	130	8	3,6	122	118,6	370
HIT18413□□	180	40	130	8	3,6	172	118,6	414
HIT18613□□	180	60	130	8	3,6	172	118,6	503
HIT13318□□	128	30	180	12	3,6	115,5	168	411
HIT13518□□	128	50	180	12	3,6	115,5	168	535
HIT17418□□	174	40	180	12	3,6	161,5	168	578
HIT17618□□	174	60	180	12	3,6	161,5	168	719
HIT23518□□	228	50	180	12	3,6	215,5	168	772
HIT23718□□	228	70	180	12	3,6	215,5	168	928

Serie HEN Kühlkörpergehäuse

Series HEN heat-sink aluminium case



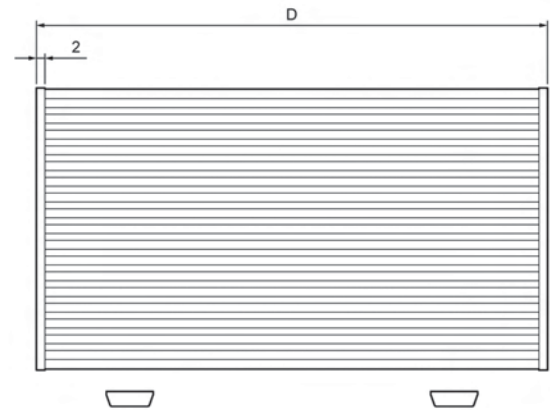
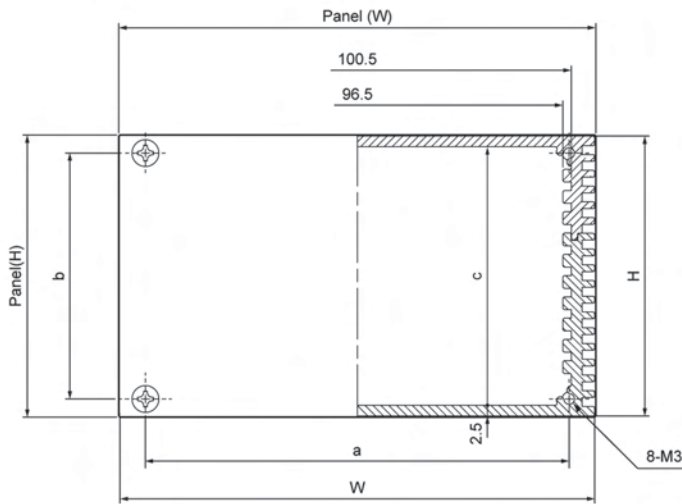
Eigenschaften

- Kühlkörper-Gehäuse mit kurzen Rippen,
- Verfügbar in 18 Größen,
- Robustes Gehäuse aus Aluminium-Profil, beliebig kombinierbar,
- 100 mm Europakartenformat,
- Sonderlängen möglich,
- schwarz oder natur eloxierte Oberflächen.

Features

- heat sink case with small fins for heat release,
- available in 18 heights,
- sturdy cases made of aluminium extrusions,
- fits 100 mm Eurocard size PCBs,
- special lengths available,
- natural or black anodized surfaces.

Ref.-Nr. Ref. no.	Bezeichnung Part name	Stück Pcs	Material Material	Farbe Oberfläche Color/Finish
1	Deckel top cover	1	Aluminium-Strangpressprofil Aluminium extrusion	silber / schwarz eloxiert silver / black anodized / hairline finish
2	Boden bottom cover	1	Aluminium-Strangpressprofil Aluminium extrusion	silber / schwarz eloxiert silver / black anodized / hairline finish
3	Frontplatte front panel	2	Aluminium t = 2.0 mm Aluminium t = 2.0 mm	silber / schwarz eloxiert silver / black anodized / hairline finish
4	Schraube screw	8	Stahl M3 steel M3	vernickelt / schwarz verchromt nickel plated / black trivalent chromate
5	Gummifuß rubber feet	4	Polyurethan polyurethane	schwarz black



HEN Profile HEN profiles



HENL-1



HENL-2



HENL-4

Farben (bei Bestellung ergänzen)
Colors (suffix to part no. when ordering)

Farbcode Color code	Platte Panel	Profil 1	Profil 2
SS	silber silver	silber silver	silber silver
BB	schwarz black	schwarz black	schwarz black

□ □ Siehe Farbtabelle
□ □ See color chart

Best.-Nr. Part no.	W	H	D	Ges. Breite Panel W	Ges. Höhe Panel H	a	b	c	Blende Cover	Gewicht(g) Weight (g)
HENI10206□□	111,2	21,4	60	112	21,9	99,2	13,4	16,4	① x2	143
HENI10212□□	111,2	21,4	120	112	21,9	99,2	13,4	16,4		258
HENI10220□□	111,2	21,4	200	112	21,9	99,2	13,4	16,4		411
HENI10306□□	111,2	32,5	60	112	33,0	99,2	24,5	27,5	① x1	179
HENI10312□□	111,2	32,5	120	112	33,0	99,2	24,5	27,5		311
HENI10320□□	111,2	32,5	200	112	33,0	99,2	24,5	27,5	② x1	488
HENI10406□□	111,2	43,6	60	112	44,1	99,2	35,6	38,6	② x2	215
HENI10412□□	111,2	43,6	120	112	44,1	99,2	35,6	38,6		365
HENI10420□□	111,2	43,6	200	112	44,1	99,2	35,6	38,6		565
HENI10506□□	111,2	54,7	60	112	55,2	99,2	46,7	49,7	① x1	250
HENI10512□□	111,2	54,7	120	112	55,2	99,2	46,7	49,7		417
HENI10520□□	111,2	54,7	200	112	55,2	99,2	46,7	49,7		③ x1
HENI10606□□	111,2	65,8	60	112	66,3	99,2	57,8	60,8	② x1	286
HENI10612□□	111,2	65,8	120	112	66,3	99,2	57,8	60,8		471
HENI10620□□	111,2	65,8	200	112	66,3	99,2	57,8	60,8		③ x1
HENI10806□□	111,2	88,0	60	112	88,5	99,2	80,8	83,0	③ x2	358
HENI10812□□	111,2	88,0	120	112	88,5	99,2	80,8	83,0		577
HENI10820□□	111,2	88,0	200	112	88,5	99,2	80,8	83,0		869