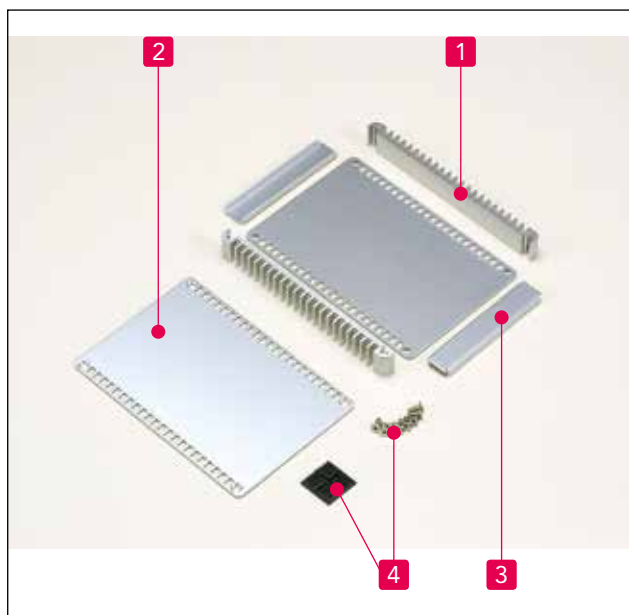




Serie HIT
Kühlkörpergehäuse

Series HIT heat-sink
aluminium case



Eigenschaften

- Kühlkörper - Seitenwand aus Strangpressprofil.
- Verfügbar in 12 Größen.

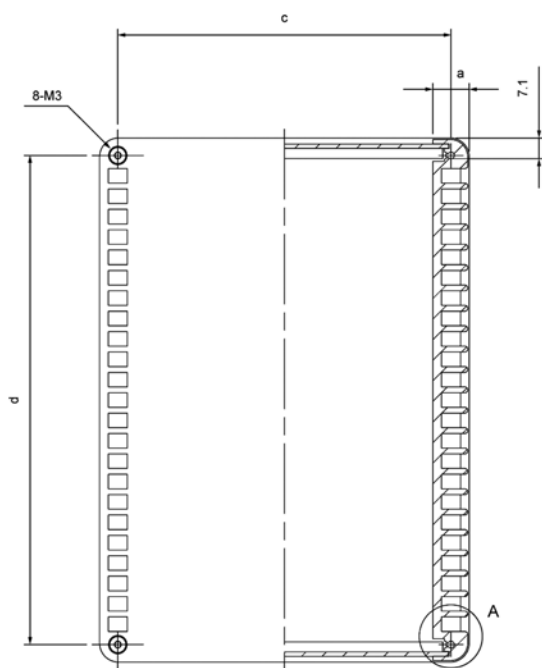
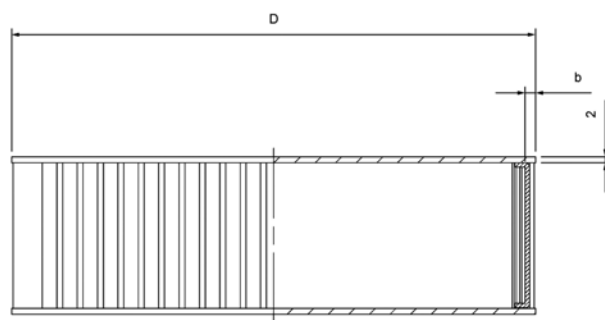
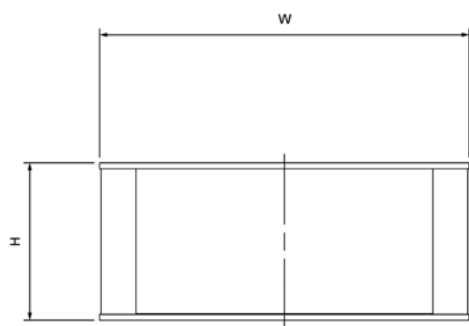
Features

- equipped with heat-sink side plates.
- available in 12 sizes.

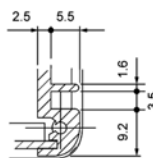
Ref.-Nr. Ref. no.	Bezeichnung Part name	Stück Pcs	Material	Farbe / Oberfläche Color / Finish
1	Kühlkörper-Seitenplatte heat-sink side plate	2	Aluminium-Strangpressprofil aluminium extrusion	silber / schwarz eloxiert silver / black anodized
2	Deckel / Boden top and bottom cover	2	Aluminium t = 2.0 mm aluminium t = 2.0 mm	silber / schwarz eloxiert silver / black anodized
3	Front-, Rückplatte front and rear panel	2	Aluminium t = 1.5 mm aluminium t = 1.5 mm	silber / schwarz eloxiert silver / black anodized
4	GummifüÙe rubber feet	4	Polyurethan polyurethane	schwarz black
-	Schrauben screw	1Satz 1set	Edelstahl / Stahl M3 stainless steel / Steel M3	kein Finish / schwarz verchromt no finish / black trivalent chromate

Serie HIT Maße

Series HIT dimensions

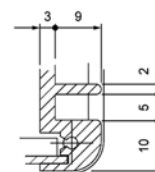


HIT□-□-13



A cross-section

HIT□-□-18



A cross-section

Farben (bitte bei Bestellung ergänzen)
Colors (please suffix to part no. when ordering)

Farbcode Color code	Deckel /Grund- platte Top / bottom cover	Vorder- und Rückseite Front / rear panel	Seitenplatte Side plate
SS	silber silver	silber silver	silber silver
BB	schwarz black	schwarz black	schwarz black

□□ Siehe Farbtabelle - □□ See color chart

Best.-Nr. Part no.	W	H	D	a	b	c	d	Gewicht (g) Weight
HIT9213□□	89	20	130	8	3,6	81	118,6	183
HIT9413□□	89	40	130	8	3,6	81	118,6	255
HIT13313□□	130	30	130	8	3,6	122	118,6	289
HIT13513□□	130	50	130	8	3,6	122	118,6	370
HIT18413□□	180	40	130	8	3,6	172	118,6	414
HIT18613□□	180	60	130	8	3,6	172	118,6	503
HIT13318□□	128	30	180	12	3,6	115,5	168	411
HIT13518□□	128	50	180	12	3,6	115,5	168	535
HIT17418□□	174	40	180	12	3,6	161,5	168	578
HIT17618□□	174	60	180	12	3,6	161,5	168	719
HIT23518□□	228	50	180	12	3,6	215,5	168	772
HIT23718□□	228	70	180	12	3,6	215,5	168	928